

COSMIC GEOMETRIES: The Prairie's Edge

A Salon Invitational curated by Hilma's Ghost

Candida Alvarez
Elijah Burgher
Holly Cahill
Mike Cloud
Gianna Commito
Edie Fake
Vanessa Filley
Julia Fish
Beverly Fishman
Diana Guerrero-Maciá
Azadeh Gholizadeh
Michelle Grabner
Christina Haglid

Rachel Hayes
Gina Hunt
Michiko Itatani
Miyoko Ito
Anna Kunz
Alice Lauffer
Aya Nakamura
Deb Sokolow
May Tveit
Georgina Valverde
Susan C White
Amy Yoes
Jade Yumang

Cosmic Geometries: The Prairie's Edge is a group exhibition of intergenerational and intersectional artists either based in the Midwest and adjacent to it, that examines the spiritual and aesthetic functions of abstract painting and geometry in art. The artists deploy a range of painterly devices to create cosmic and transcendental visions that combine esoteric world traditions with the language of Modernism. Their motifs are inspired by sources as divergent as medieval works of art, climate change, landscapes, interior design, and architectural ruins, rendering formal devices that range from optical illusions to elaborate ornamentation techniques.

These artists primarily work with the language of painting, but also draw from languages and materials adapted from sculpture, installation, craft and textiles. Within these works lies a rich affection for color, shape, and compositional elements, which reveal the daring sensibilities that artists are bringing to the historically overlooked arena of the spiritual in art. These artists' practices build upon palimpsest legacies of alternative power structures that are constantly being erased.

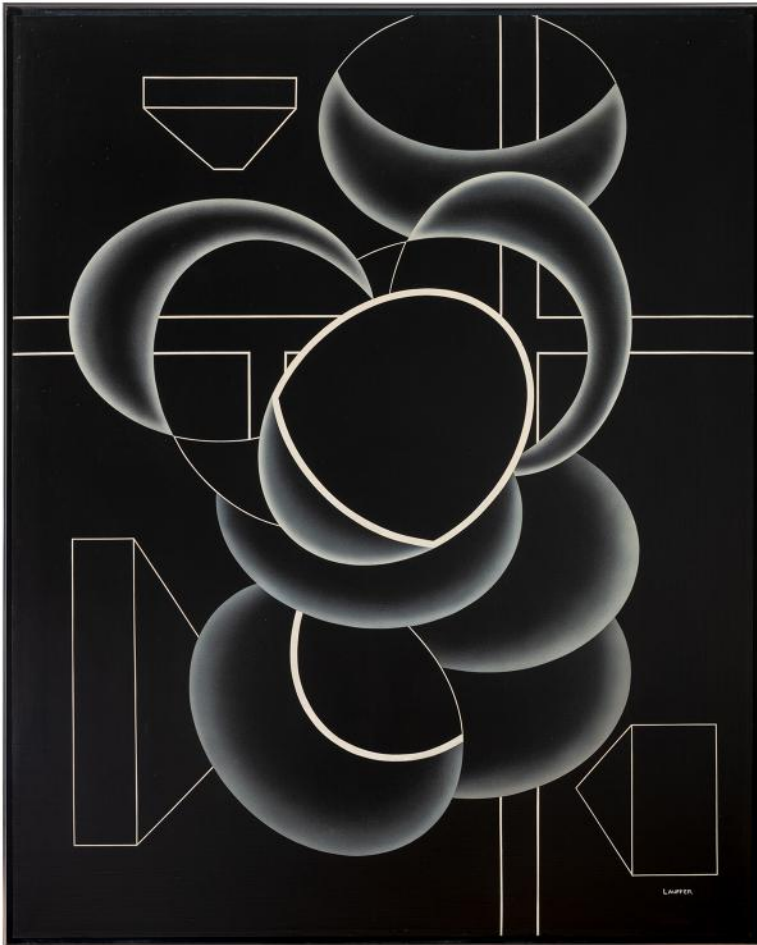
In January 2022, Hilma's Ghost curated the collective's first curatorial project Cosmic Geometries at EFA Project Space in New York. That show had 25 intergenerational and diverse artists primarily working in New York, but also a few international and historical artists. Cosmic Geometries: The Prairie's Edge focuses on 26 artists living, from and/or strongly associated with the Midwest and also include several historically significant artists. The focus of both these exhibitions is primarily on women, nonbinary, and trans artists as that aligns with the mission of the collective.

For the physical placement of the artwork in Cosmic Geometries: The Prairie's Edge, tarot cards were drawn from the twenty-two Major Arcana for each artist in alphabetical order. The art work in the exhibition was then placed in order of the cards - from The Fool (0) to The World (22). The remaining 4 artworks were drawn from the suite of Pentacles. Remarkably, or perhaps not remarkably, the final placement of the artworks were faithful to their tarot pairs that are hung alongside them in the exhibition. We have included pulled cards with each artwork in this document.

Cosmic Geometries: The Prairie's Edge is exhibited in conjunction with HILMA'S GHOST | SPECTRAL VISIONS: A Feminist Collective Signals Magickal Futures a solo presentation by Hilma's Ghost (Sharmistha Ray and Dannielle Tegeder) in three parts featuring selections of artworks made by the collective since their formation in 2020.

April 12 - June 1, 2024

SECRET | BEACH



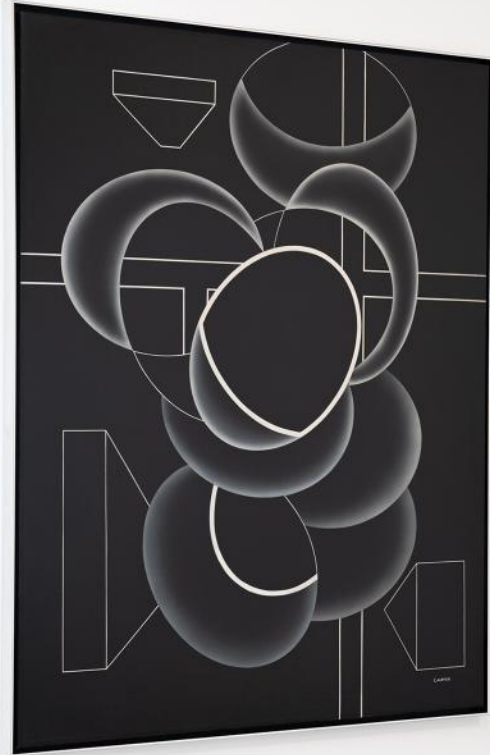
Phaedra, 1976
Acrylic on canvas
61 1/2 x 49 1/2 inches
Courtesy of the Illinois State Museum

Sphinx, 1977
Watercolor on paper
30 x 22 3/8 inches
Courtesy of the Illinois State Museum

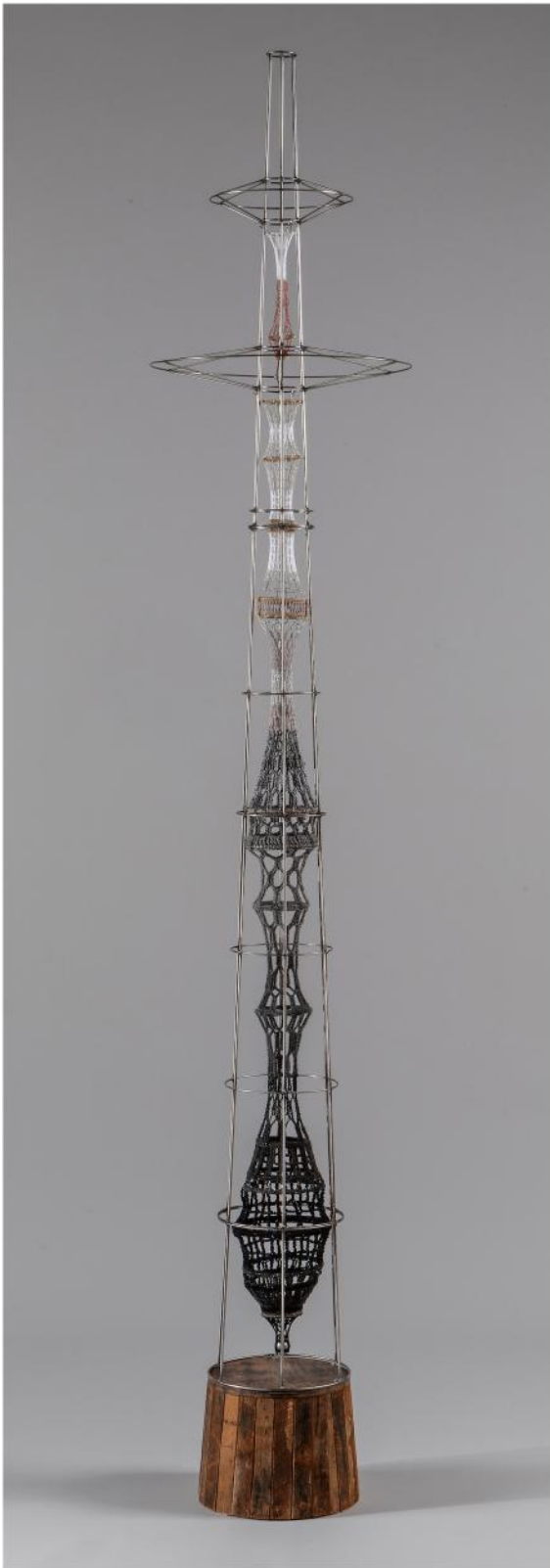


THE FOOL - 0

Alice Lauffer

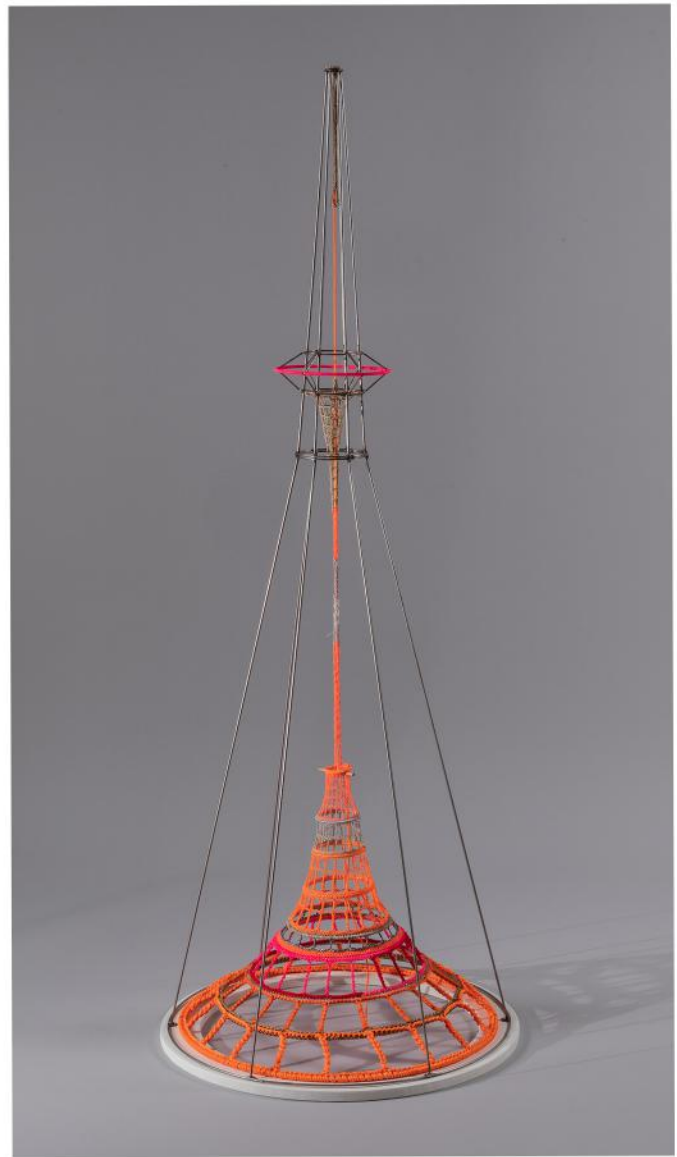


Installation view *Cosmic Geometries: The Prairie's Edge*. Clockwise: Alice Lauffer



Beacon, 2019

Welded steel wire; crocheted Nylon rope, crocheted Nylon thread, crocheted wool, crocheted acrylic yarn and crocheted hemp thread; and MDF
65 x 17.5 x 17.5 inches



Vessel (For Mathilde Gartner), 2019

Welded steel wire; crocheted Nylon rope, crocheted Nylon thread, crocheted wool, crocheted acrylic yarn and crocheted hemp thread; and MDF
72 x 27.75 x 27.75 inches





Installation view *Cosmic Geometries: The Prairie's Edge*. Georgina Valverde (foreground), Alice Lauffer (background)

Christina Haglid



Midnight Nest, 2022
Watercolor and gouache on paper
11 x 9 inches
Courtesy the artist and Gallery Victor



THE HIGH PRIESTESS - II



Gianna Commito



Thurn, 2023
Casein and clay ground on panel
48 x 40 inches
Courtesy the artist and Abattoir Gallery



THE EMPRESS - III



Installation view *Cosmic Geometries: The Prarie's Edge*. Christina Haglid (left), Gianna Commito (right)

Vanessa Filley



Merge + Divide, 2022
Watercolor, Pencil + Thread
44 x 56.5 inches



THE EMPEROR - IV

Vanessa Filley



Installation view *Cosmic Geometries: The Prairie's Edge*. Vanessa Filley (left), Christina Haglid (right)

Michiko Itatani



"Three Body Problem" painting from Tesseract Study 21-B-4 (studio view), 2021
Oil on canvas
96 x 78 inches



THE HIEROPHANT - V

Michiko Itatani



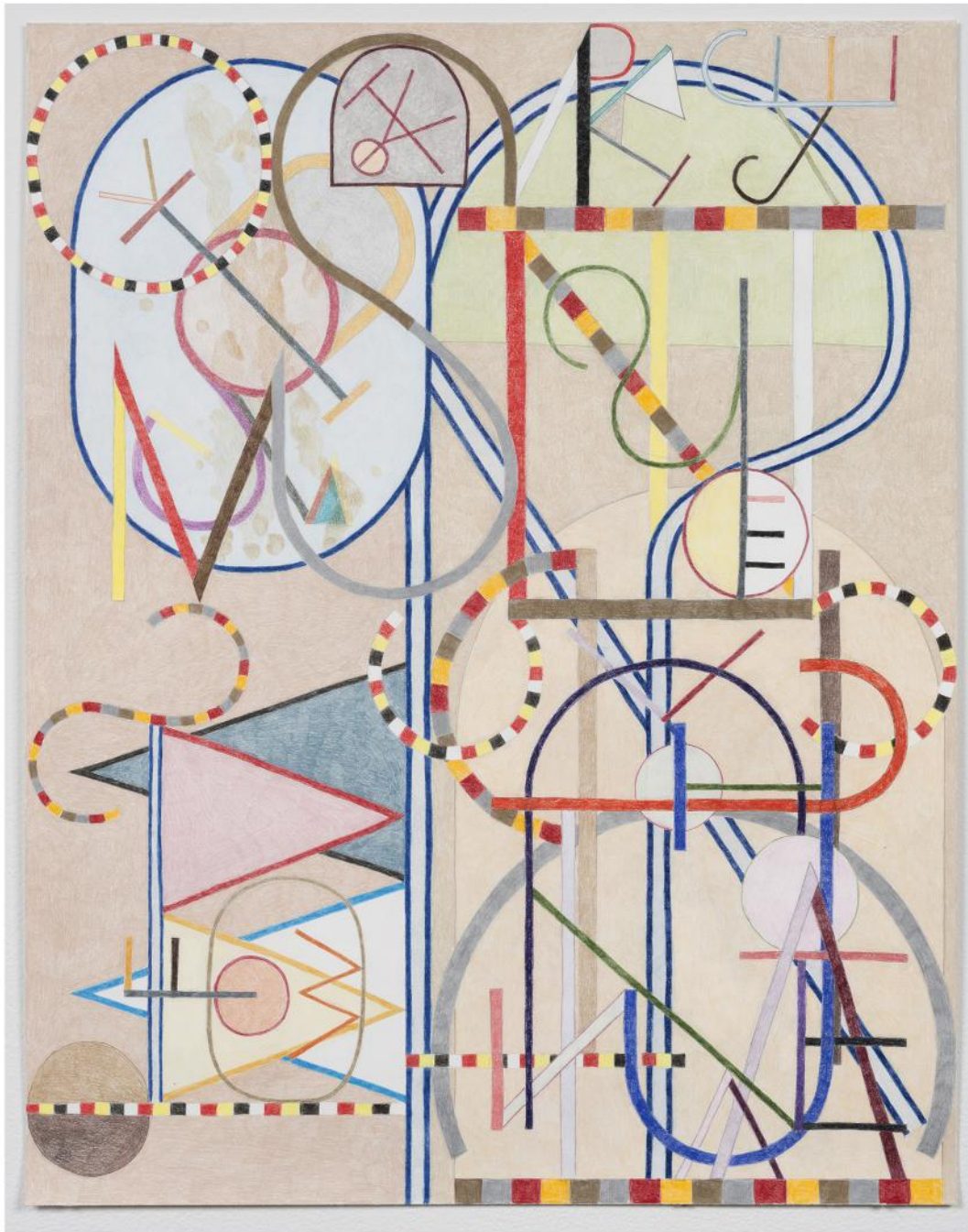
Installation view *Cosmic Geometries: The Prairie's Edge*. Michelle Grabner (left), Michiko Itatani (right)



The tree, 2022
Wool and wood
27 x 11 x 67 inches
Courtesy the artist and Goldfinch Gallery



Elijah Burgher



Hex Centrifuge, 2015
Colored pencil on paper
28 1/4 x 23 inches
Courtesy the artist and Western Exhibitions



THE CHARIOT - VII

Elijah Burgher



Installation view *Cosmic Geometries: The Prairie's Edge*, left to right: Elijah Burger, Susan C. White and Azadeh Gholizadeh

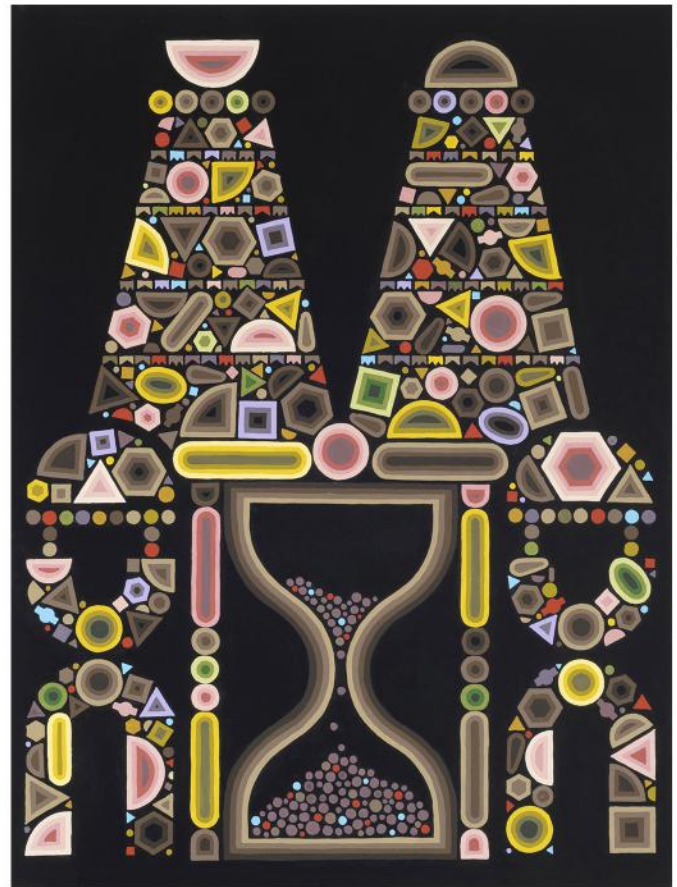
Edie Fake



Mercury Pavilion, 2021
Graphite and collage on paper
34 x 27 inches, framed
Courtesy the artist and Western Exhibitions



STRENGTH - VIII



Strange and New, 2021

Gouache on panel

14 x 11 inches

Courtesy the artist and Western Exhibitions

The Long and Short of It, 2021

Gouache on panel

14 x 11 inches

Courtesy the artist and Western Exhibitions

After Hours, 2021

Gouache on panel

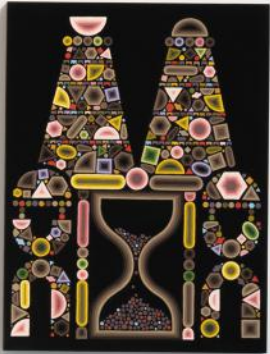
24 x 18 inches

Courtesy the artist and Western Exhibitions



STRENGTH - VIII

Edie Fake



Installation view *Cosmic Geometries: The Prairie's Edge*. Edie Fake



Untitled (Epilepsy, Anxiety, Depression), 2019 / 2024
Urethane paint on wood
43 x 41 x 2 inches
Courtesy the artist and Miles McEnery Gallery



THE HERMIT - IX



Installation view *Cosmic Geometries: The Prairie's Edge*. Beverly Fishman (left), Edie Fake (right)

Miyoko Ito



Untitled, c. 1955
Oil on canvas, framed
50 x 36 inches
Courtesy private collection, Chicago



THE WHEEL OF FORTUNE - X

Miyoko Ito



Installation view *Cosmic Geometries: The Prairie's Edge*. Miyoko Ito (left), Aya Nakamura (right)

Rachel Hayes

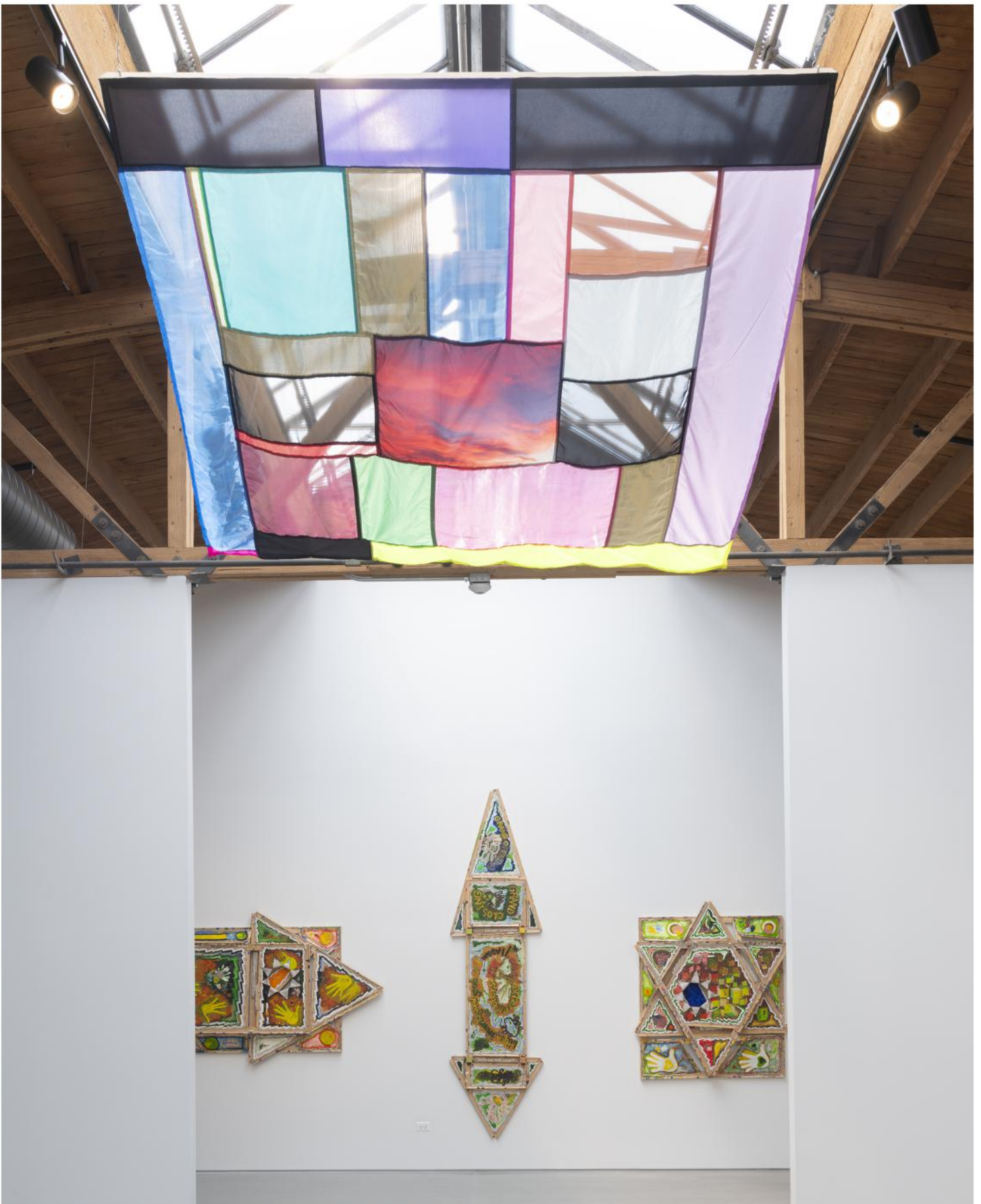


Field of Vision, 2022
Nylon, polyester and thread
80 x 78 inches



JUSTICE - XI

Rachel Hayes



Installation view *Cosmic Geometries: The Prairie's Edge*. Rachel Hayes (top), Mike Cloud (bottom)

Candida Alvarez



c.c.3, 2014
acrylic on cotton
25 1/4 x 25 3/4 in (framed)
Courtesy the artist and Monique Meloche Gallery



c.c.4, 2014
enamel/acrylic on cotton
25 1/4 x 25 3/4 in (framed)
Courtesy the artist and Monique Meloche Gallery



c.c.5, 2014
enamel/acrylic on cotton
25 1/4 x 25 3/4 in (framed)
Courtesy the artist and Monique Meloche Gallery



THE HANGED MAN - XII

Candida Alvarez



Installation view Cosmic Geometries: The Prairie's Edge: Michelle Grabner (foreground), Candida Alvarez (background)



Alphabet, 2023
Coloured pencil on artist-made paper
19 1/2 x 16 inches
Courtesy the Artist and Western Exhibitions



DEATH - XIII



Installation view *Cosmic Geometries: The Prairie's Edge*. Clockwise: Alice Lauffer, Hilma's Ghost, Georgina Valverde



Untitled, 2024

Silver on masonry artifact: Pabst Mansion Carriage House, Milwaukee WI
25h x 25w x 17d inches
Courtesy the artist and Mickey

Untitled, 2024

Silver on masonry artifact: Pabst Mansion Carriage House, Milwaukee WI
25h x 25w x 17d inches
Courtesy the artist and Mickey



TEMPERANCE - XIV

Michelle Grabner

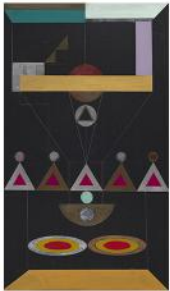


Installation view *Cosmic Geometries: The Prairie's Edge*. Clockwise: Candida Alvarez, Michiko Itatani, Beverly Fishman, Edie Fake, Michelle Grabner

May Tveit



The Window, 2017
Corrugated cardboard
68 x 55 x 6 inches



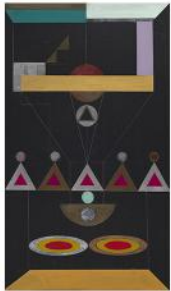
THE DEVIL - XV



All is Well, 2021
Monoprint, ink on paper, Rives BFK
48 x 34 inches, framed



The Road, 2017
Corrugated cardboard
68 x 29.5 x 4 inches



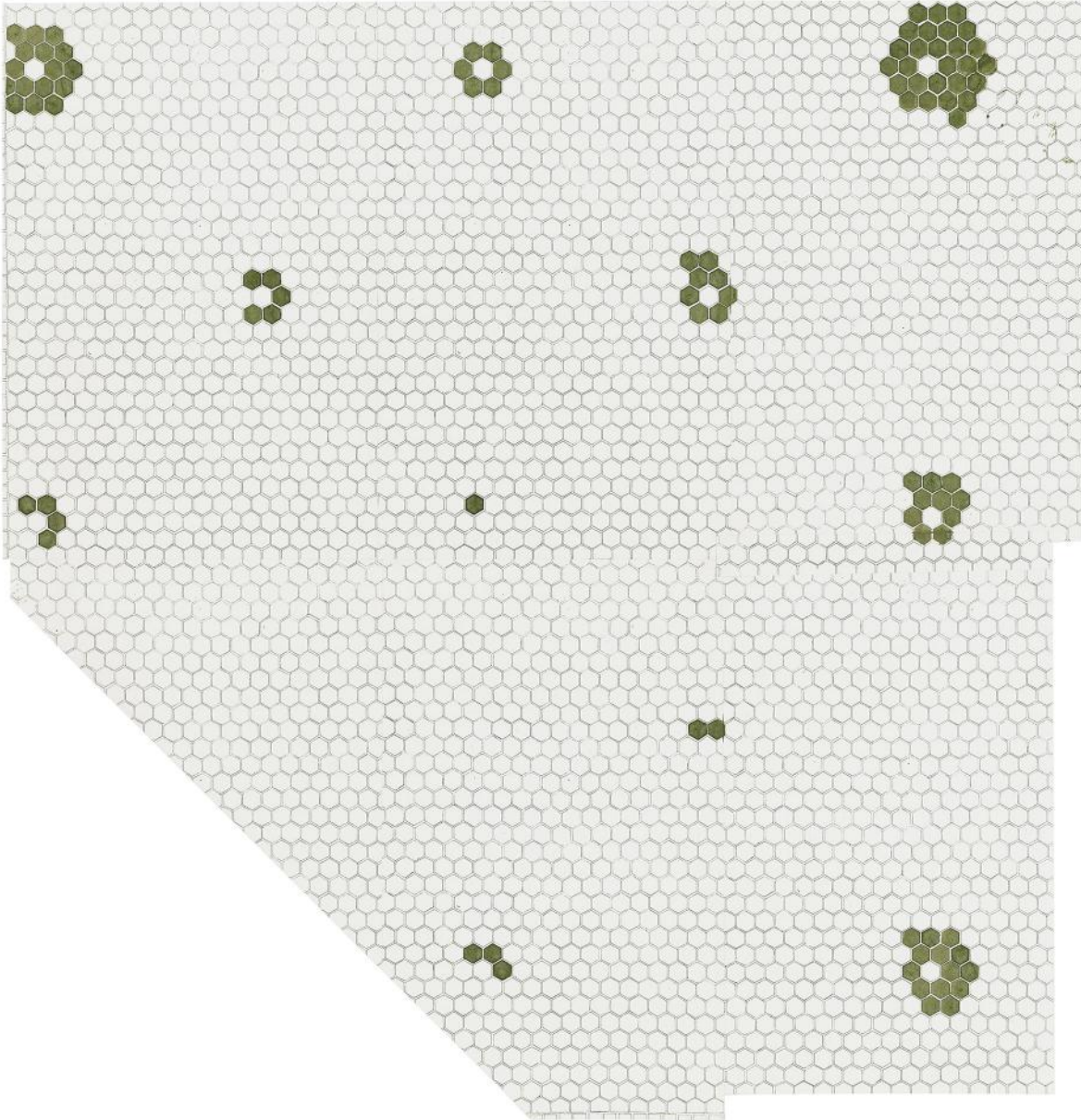
THE DEVIL - XV

May Tveit



Installation view *Cosmic Geometries: The Prairie's Edge*. May Tveit

Julia Fish

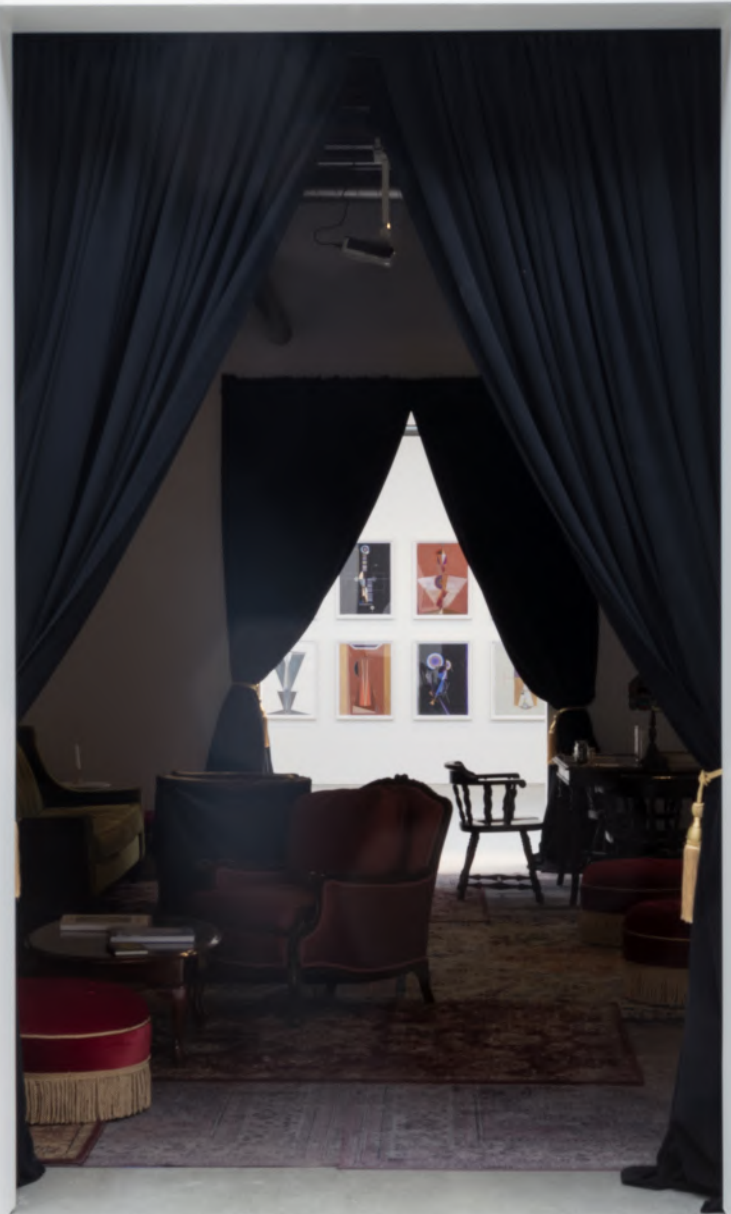


First plan for floor [floret] — section one, 1998
gouache on assembled, laser-printed paper
23 1/4 x 23 1/4 inches
© Julia Fish, Courtesy David Nolan Gallery



THE TOWER - XVI

Julia Fish



Installation view *Cosmic Geometries: The Prairie's Edge*. Michelle Grabner (left), Julia Fish (right)



Stranger no. 1, 2023

Canvas, dye, deconstructed clothing, driftwood, Shou sugi ban turned cedar, textiles, gouache and buttons on canvas
57.5 x 49.5 inches





Installation view *Cosmic Geometries: The Prairie's Edge*. Hilma's Ghost (left), Jade Yumang (center), Diana Guerrero-Maciá (right)

Anna Kunz



Moss, 2023
Acrylic on canvas
60 x 66 inches
Courtesy of the artist and Alexander Berggruen, NY



THE MOON - XVIII

Anna Kunz



Installation view *Cosmic Geometries: The Prairie's Edge*. Candida Alvarez (left), Anna Kunz (right)

Susan C White



Gathering, 2023
Acrylic and glassine on canvas
74 x 60 inches



THE SUN - XIX

Susan C White



Installation view *Cosmic Geometries: The Prairie's Edge*. From left to right: Susan C. White, Azadeh Gholizadeh, Miyoko Ito and Aya Nakamura

Gina Hunt

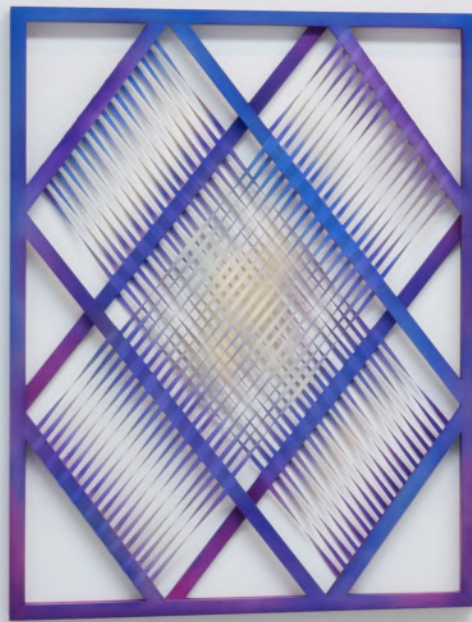


Beam Splitter (i), 2023
Acrylic on cut canvas and poplar
60 x 45 x 2.125 inches
Courtesy the artist and 65GRAND



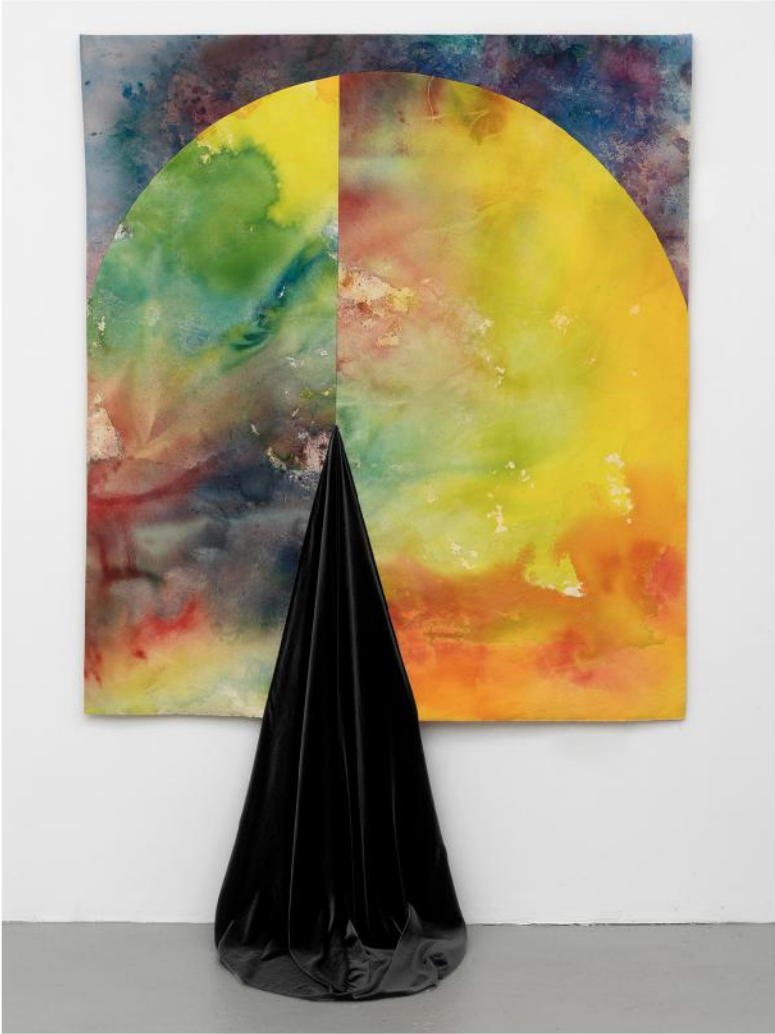
JUDGMENT - XX

Gina Hunt



Installation view *Cosmic Geometries: The Prairie's Edge*. Gina Hunt

Holly Cahill



Piercing the Storm, 2022
Acrylic on canvas
58 x 84 inches



Holly Cahill



Installation view *Cosmic Geometries: The Prairie's Edge*. Holly Cahill (left), Deb Sokolow (right)



Visualizing Four Rooms and a Hall Engineered for Temporary Disappearances, 2021

Graphite, crayon, colored pencil, pastel and collage on paper on DiBond
36 x 30 x 1 inches

Visualizing Things Hidden Inside Walls (More Things Than Usual), 2021

Graphite, crayon, colored pencil, pastel and collage on paper on DiBond
36 x 30 x 1 inches
Courtesy the Artist and Western Exhibitions





Installation view *Cosmic Geometries: The Prairie's Edge*. Clockwise: Jade Yumang (left), Diana Guerrero-Maciá (middle), Deb Sokolow (right)



Don't Leave Me, Fante, 2017
Cotton, fiberfill, foan stabilizer, aluminum wire, basswood and pine
42 x 19 x 10 inches

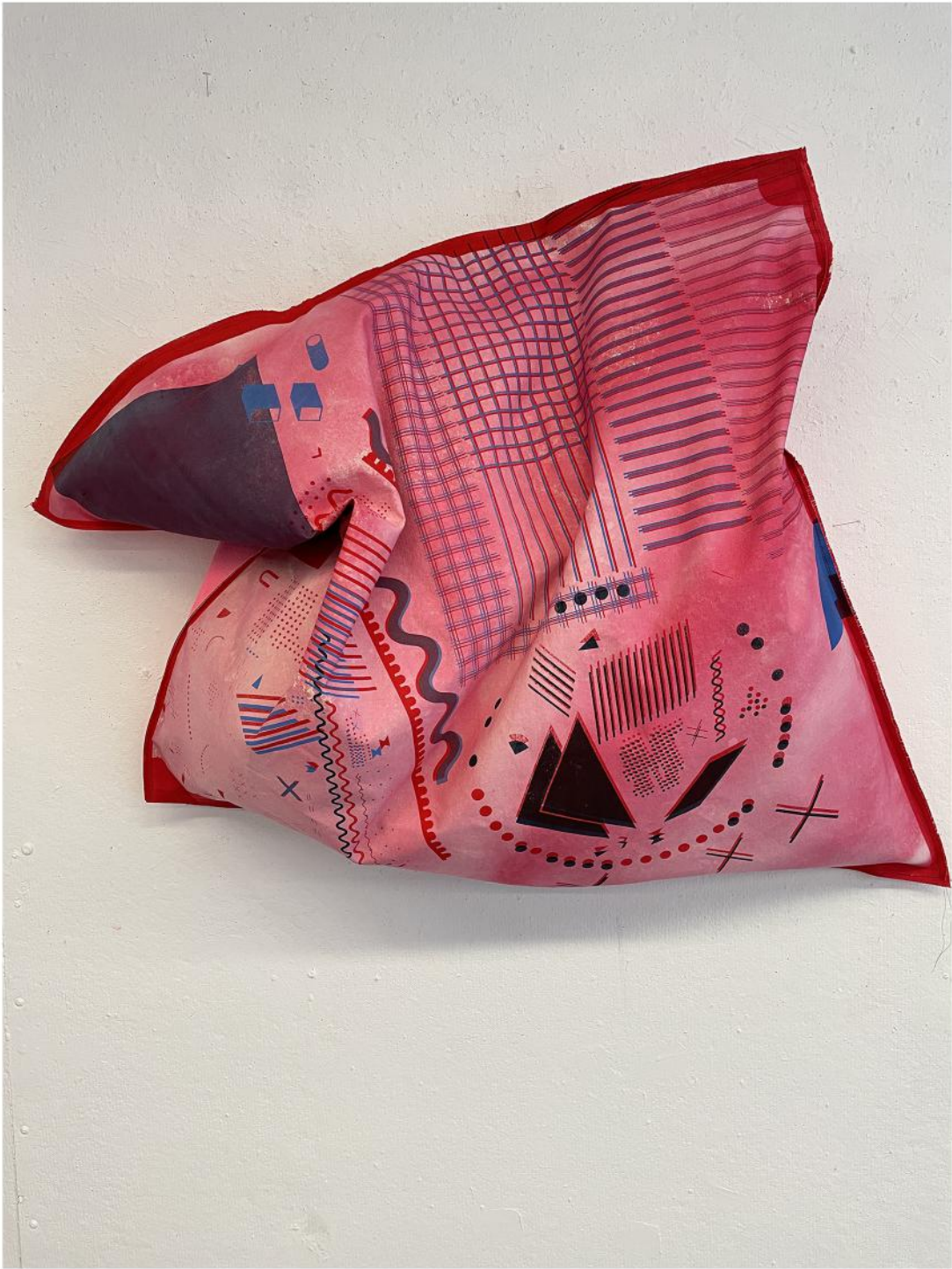


Jade Yumang



Installation view *Cosmic Geometries: The Prairie's Edge*. Jade Yumang (left), Diana Guerrero-Maciá (right)

Amy Yoes



Synform_2401, 2023
Printed/ painted canvas soft sculpture
34 x 36 x 10 inches



QUEEN OF SWORDS



Hero Andrew Garcia, 2020
Oil on linen with mixed media
50 x 53 x 2 inches
Courtesy the artist and Thomas Erben Gallery



III of PENTACLES

Mike Cloud



Untitled (Shopping List), 2020
Oil on linen with mixed media
52 x 58 x 12 inches
Courtesy the artist and Thomas Erben Gallery



III of PENTACLES



Installation view: (from left to right) **Hero Andrew Garcia**, 2020. Oil on linen with mixed media, 50 x 53 x 2 inches, **Business Idea Beyond Grub and Weevil**, 2020. Oil on canvas and mixed media, 118 x 33 x 2.5 inches, **Untitled (Shopping List)**, 2020. Oil on linen with mixed media, 52 x 58 x 12 inches.
Courtesy the artist and Thomas Erben Gallery



SECRIST | BEACH

Installation photography by Nathan Keay

SECRIST | BEACH, 1801 W. Hubbard St., Chicago | secristbeach.com | info@secristbeach.com | +1 312 212-8888